

# *Keswick Christian School Choral Music 2011-2012*



## *Sanctified by Truth*

Mr. David Holtzhouse, Superintendent

Mr. Nick Stratis, Upper School Principal

Mrs. Chanda Mangiaracina, Director of Fine Arts  
Choral Music, Praise Band, Musicals, Piano Program

Mrs. Maribeth Trill, Instrumental Music, Keswick Ringers

Mrs. Annie Bailey, Accompanist, Piano instructor

Mrs. Kellie McGuire, Piano instructor

Mrs. Esther McClure, Piano instructor

## **Contents**

KCS Fine Arts Department Mission and Goals.....	page 2
Fine Arts Performing Groups and Student Leadership.....	page 3
Fine Arts Awards.....	page 4
Absences.....	page 5
Choir Uniforms .....	page 6
FVA Activities.....	page 7
Music Boosters and Fundraisers.....	page 8
Grading Policies.....	page 9, 10
Contract.....	page 11

***KESWICK CHRISTIAN SCHOOL FINE ARTS DEPARTMENT MISSION***

- Since the fine arts are gifts of our creative and loving God, we will approach our art with excellence as our goal in humble reverence and joyful thanksgiving.
- We will engage in the fine arts with care and an orientation toward producing beauty, striving to reflect the incredible detail and harmony of God's creation.
- The excellence of the artistic product, although a worthy goal, must not be an idol but rather a witness for our Lord.
- Fine arts students will be challenged to make Christ their model at all times, as we demonstrate love for Him and one another.



***KESWICK CHRISTIAN SCHOOL FINE ARTS DEPARTMENT GOALS 2011-2012***

- The KCS fine arts department will provide our students programs that are vibrant, active, and successful.
- The fine arts faculty will strive to be loving, organized, and good communicators.
- We will serve our school and community in music ministry both on campus and out in the community.
- The Music Boosters will raise funds to help families afford the various costs associated with our department and to fund all of the normal music activities.

## KCS CHORAL MUSIC AND PERFORMING GROUPS

All performing groups require a full school year commitment of participation, remaining in the group for the entire school year.

### Co-Curricular Groups

These groups meet daily during the school day, although they all also involve commitments outside of the school day. **All attendance and grading policies are in place at established extracurricular events, just as they are during the school day.** Those who are considering being a member of these groups should carefully consider the extracurricular demands of the group before making the year long commitment (please see Fine Arts Calendar). At extracurricular events, parents are to pick up their student on time. Those who remain long after the event is over will jeopardize their participation in the future.

- **6<sup>th</sup> Grade Choir** performs at the Christmas and Spring Choral concert while focusing on vocal fundamentals.
- **Cantus Choir**, for grades 7, and 8. This group performs several concerts a year, and also performs at a yearly vocal assessment.
- **Concert Choir** (high school choir) This is the premier vocal performing group at Keswick and actively performs at concerts, community events, the KCS Annual Banquet, churches, choral assessments and GRADUATION.

### Extra-Curricular Groups

Extracurricular rehearsals and performances are an important part of participating in an extracurricular group. Those who are considering being a member of these groups should carefully consider the demands of the group before making the yearlong commitment (please see Fine Arts Calendar). At extracurricular events, parents are to pick up their student on time. Those who remain long after the event is over will jeopardize their participation in the future.

- **Keswick Praise** is a band that performs praise and worship music at high school chapels and rehearses before school twice a week. Criteria for membership include musical ability and spiritual maturity.
- **Keswick Ringers Handbells**, junior and senior high. This group rehearses before school twice a week and performs several times a year. The criteria for membership are commitment to the group's schedule including rehearsals and concerts.

## MUSIC GROUP STUDENT LEADERSHIP

*Using Christ as our example, leaders are servants. Each member must demonstrate a genuine concern for the musical, moral, and spiritual welfare of the group, demonstrated by a willingness to serve others, showing positive leadership, and encouraging others to do the same. Each member must attend all events, arriving early and leaving only after all of the work is finished. Each leadership team member must set a positive example in the way he/she conducts him/herself every day in rehearsal. Leadership Team members must allow time to fulfill their responsibilities.*

### **CHOIR LEADERSHIP TEAM**

#### Section Leaders

Section leaders must learn first and second parts for their section. The section leaders serve as liaisons to Mrs. Mangiaracina to communicate problems in music and general attitudes, problems and praises in the choir.

#### Secretary

The secretary takes roll. It should be noted that the secretary does not receive passes or excuse tardies. Those should be brought to Mrs. Mangiaracina.

#### Librarian

The librarian helps hand out and keep track of music. At the end of the year they collect and organize the music library.

#### Manager

The manager announces birthdays and other important news to the choir. The manager also leads in prayer at times and serves as an encourager to the choir.

## AWARDS

### **Class Choir Awards**

Each school year, in grades 6 through 12, one student from each class is chosen to receive an award based on their grade point average, performance in class and character.

### **Concert Choir Four-Year Senior Award**

#### **The Director's Award**

This award is presented to the most outstanding 6<sup>th</sup> Grade, Cantus (7 – 8) and Concert Choir member. Criteria for this award will include involvement in various outside musical activities and/or honor groups, exemplary behavior and technique, and general support for all choral music activities. This award is not only based on the student's musical ability, but also on moral character and spiritual maturity.

#### **Senior Choir Award**

This award is given to the senior who has taken at least two years of Art, Band or Choir in high school. The recipient of this award is chosen by the teacher based on grade point average, performance in class, participation, and character.

#### **Outstanding Male and Female Vocalist**

This award is given at the discretion of the director to a gentleman and lady in the Concert Choir who has shown consistent responsibility in knowing his part and in singing with sound vocal technique.

#### **The Music Boosters Randall Kile Scholarship Award**

This is a monetary award given to an outstanding senior band and/or choir student who will be pursuing music in college. This award will be presented at the High School Graduation Ceremony.



*...let all who take refuge in you be glad;  
let them ever sing for joy. Psalm 5:11*

## **ATTENDANCE AT EXTRACURRICULAR FINE ARTS EVENTS**

### **Excused Absence Reasons:**

- Sickness
- Death in the family
- EMERGENCY doctor appointment
- Other extenuating circumstances clearly outside the control of the student and parents
- Pre-arranged absences may be excused at the discretion of the director if they are for significant reason and if the director is approached at least a week in advance with a note of explanation. If the request is to miss a performance, the importance of the performance will also be weighed in whether or not the director excuses the student.

**Examples of unexcused absence reasons**, which result in the lowering of the student's grade based on the importance of the event missed and the reason why:

- Forgot
- No ride
- Homework, test, quiz, etc. due the following day
- Conflict with other event (non-prearranged)
- Doctor's appointment (non-emergency, could have been scheduled at another time)

**If you do not know whether a reason for an absence is excused, ask your director as far in advance as possible.**

**CHOIR UNIFORMS**

**Music students will wear the exact, prescribed uniform for all performances.** Jewelry and other ornamentation must not be worn, with the exception of small earrings for girls. Uniforms must be clean and ironed. “Solid black” means that, from a few feet away, one can only see the color black, without any other distracting details (exterior pockets, brand badges, large stitching or embroidery, “swoosh stripes” etc.).

**Please always hang up your uniform when you are not wearing it. Keep it clean and wrinkle-free so it’s sharp and ready to go for our concerts.**

**6<sup>th</sup> Grade Choir Uniform**

Boys

- Solid black dress pants with a plain black belt.
- Solid black socks and shoes
- Plain white dress shirt or polo shirt

Girls

- Black skirt of appropriate length
- Black tights or hose with dress shoes
- Plain white dress shirt or polo shirt

**Cantus (7 -8) Choir Uniform:**

Boys

- Solid black dress pants with a plain black belt.
- Solid black socks and shoes.
- Tux shirt, tie and cumberbund

Girls

- Black skirt of appropriate length (purchased through Music Boosters)
- Black tights or hose with dress shoes
- Tux shirt, tie and cumberbund

**Concert Choir (9-12) Formal Uniform**

**Gentlemen**

- White tux shirt (purchased through Music Boosters)
- Black tux pants
- Cumberbund and matching bow tie (rental item)
- Black tux jacket (rental item)
- Black dress shoes (purchased through Music Boosters)

Pants are to be worn so that the hem is at the waistline, not around the hips. Only solid black socks are to be worn. Bow ties are to be worn around the neck properly. Tux shirt is to be buttoned down; including the cuffs at all times when on campus or at the performance sight. ***Let’s always look classy when in uniform!***

**Ladies**

- Black dress (rental item)
- Black hose
- Black dress shoes (purchased through Music Boosters)
- Pearl necklace (purchased through Music Boosters)

The dress is to be worn with tied back for uniformity. Pearl necklace is to be worn throughout each event. Black is the only color allowed for hose. ***Let’s always look classy when in uniform!***

***UNIFORMS SHOULD BE COVERED AND HUNG UP WHEN NOT BEING WORN***

Students will be sized at the beginning of the school year for ordering of band uniforms. An itemized bill is provided through the Music Boosters for each member.

## FVA ACTIVITIES

FVA stands for Florida Vocal Association. This organization sponsors various activities designed to enhance the music education of students throughout the state. These include: All-State groups, Solo and Ensemble Assessment, and Choir Assessment. To participate in FVA activities, a student must have a minimum 2.0 grade point average. Choir members in grades 6-12 are eligible to participate in FVA events.

**All-State Choir** auditions take place in the fall. Once selected, All-State students accompany their director to the Florida Music Educators Association Convention held in Tampa, usually during the first Thursday through Saturday in January. The All-State Choir is comprised of some of the most outstanding school musicians and is under the leadership of a highly distinguished conductor. After several days of rehearsal, the All-State groups perform a concert on the concluding Saturday. It is a great musical experience worthy of the effort to audition!

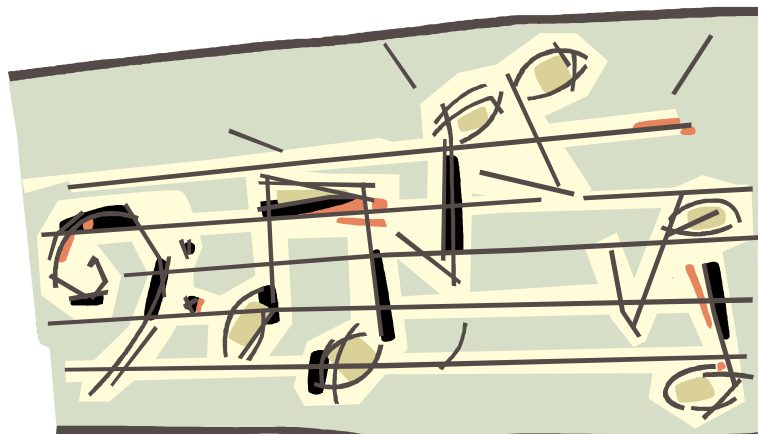
**Solo and Ensemble Assessment** takes place in the spring. In order for a student to participate, however, they must choose their piece early and are responsible for learning it on their own. Students learn and improve a great deal as a result of preparing a solo or ensemble. At the assessment, students will perform for a certified judge who will rate the performance and provide comments.

- For solos: KCS will attempt to assist in finding a piano accompanist for every student who needs one. Students are responsible for paying the piano accompanist (fees TBA)

**Choir Assessment** is a wonderful opportunity for our choirs to be heard and adjudicated by outstanding choral directors from around the state. It is also an opportunity for us to hear choirs from other schools in Pinellas County to help us determine if we are working to our age group's potential. At this event each choir performs two pieces for a panel of judges, before an audience of our peers. Our performance is followed by a brief clinic on stage by a distinguished choral director. We then go to the Sight-Singing room where we perform rhythmic and vocal sight-singing before a judge.

- High school choirs that earn a "superior" rating are eligible to perform at the State Assessment later in the spring.
- **Because of the importance of these events, extra rehearsals may be scheduled in the weeks prior to assessment. Attendance at these rehearsals will be mandatory**

As we participate in FVA assessments with many students from public schools, let us be sure to honor our Lord with musical excellence and a fine display of God-honoring character.



## **MUSIC BOOSTERS**

(Excerpts from Music Booster By-Laws)

### **Mission**

The Keswick Christian School Music Boosters Association will exist in order to:

1. Glorify God through the support of a God-honoring music education for KCS students in grades 5-12; and through obedience to Scripture and to the leading of the Holy Spirit in all decision-making, communication and activity.
2. Help in the fulfillment of Christ's Great Commission, witnessing as to the authenticity and power of Christ actively working in us in all we do and say, both individually and corporately, knowing that as "Christian" is a part of our name we are held under special scrutiny.
3. Model appropriate Christian service and obedience for our children.
4. Provide for the financial needs of the band and choir programs when needs go beyond what is provided by Keswick Christian School.
5. Support the music directors in the execution of their duties, providing help where needed, and showing respect for the authority of their position, in word and deed, to the band and choir students.
6. Encourage and hold accountable our individual children to invest their God-given talents wisely: Working hard in band or choir, engaging in music practice regularly at home, and being a responsible band/choir member.
7. Provide for the additional needs of the music program as determined by the music directors and school administration.

### **Membership**

All parent(s) or guardian(s) of students participating in either vocal or instrumental music in grades 5 – 12 make up the membership of the Music Boosters.

### **Meetings**

There will be occasional Music Booster Meetings. These will be announced well in advance and will cover important information for families with students involved in music. Your attendance will help to communicate news and concerns and build the KCS music department.

### **Music Boosters Executive Board**

**The Music Boosters Executive Board has monthly meetings with the music directors. The purpose of these meetings is to support the students in all monthly activities. They will get chaperones for events, be responsible for fund-raisers. The MBEB is made up of five principle members. They are:**

President  
Vice President, Band  
Vice President, Choir  
Secretary  
Treasurer

### **A Note about Fundraisers:**

Our Fund-Raising Events for this year are the following:

1. Squire Dance – October 29, 2011
2. Bella Sera – April 20, 2012

We ask that every student participate fully with their families in these fun events. They are great enhancers of our Music Department and also our KCS Student Life.

Thanks for your support!

Mrs. Mangiaracina and Mrs. Trill

## Grading Policies 2011-2012

### 6<sup>th</sup> Grade Grading Policy:

*Keswick 6<sup>th</sup> grade Choir students will be graded in three major areas:*

- A. Rehearsal Participation
- B. Concert Attendance
- C. Worksheets/Quizzes/Projects

*Your performance in each of these areas will determine each quarter's grade. The percentage scale is based on 100%; the letter grade breakdown is consistent with Keswick's grading policy.*

- A. Rehearsal Participation: (50%) Each student's rehearsal participation will be evaluated daily on a five point scale based on the following:
  - Attitude
  - Concentration
  - Respect for classmates
  - Talking only when permissible
  - Materials
- B. Concert Attendance: (30%) Our concert performances are our opportunity to lead our families in worship and to demonstrate all that we have been learning in choir. Choir is a performance art and therefore the performances listed on the calendar play a major part in your final grade. An unexcused absence from a choir performance will result in a grade of 60% (F).
- C. Worksheets/Quizzes/Projects: (20%) There will be occasional worksheets, quizzes, and projects. These will be used to encourage growth and to assess student's progress. With hard work and concentration in class, students will have no trouble succeeding in this area.

### Cantus (7-8 Choir) Grading Policy:

*Keswick 7-8 Choir students will be graded in four major areas:*

- A. Rehearsal Participation
- B. Performance
- C. Worksheets/Quizzes/Projects
- D. Extra Evidence

*Your performance in each of these areas will determine each quarter's grade. The percentage scale is based on 100%; the letter grade breakdown is consistent with Keswick's grading policy.*

- A. Rehearsal Participation: (50%) Each student's rehearsal participation will be evaluated daily on a five point scale based on the following:
  - Attitude
  - Concentration
  - Respect for classmates
  - Talking only when permissible
  - Materials

- B. Performance: (20%) The performances listed in the calendar play a major part in your final grade. At each performance you will be graded for timely arrival, uniform, and concert participation including behavior. An unexcused absence from a choir performance will result in a grade of 60% (F).
- C. Worksheets/Quizzes/Projects: (20%) There will be occasional worksheets, quizzes, and projects. These will be used to encourage growth and to assess student's progress. With hard work and concentration in class, students will have no trouble succeeding in this area.
- D. Extra Evidence: (10%) You will be responsible for 1 credit of Extra Evidence for each quarter. These are further specified on the Extra Evidence sheet and represent various contributions to your musical experience.
- E. Attendance: This is an important part of choir. One student's absence affects the whole group. Please be mindful of team aspect of choir class as you schedule necessary appointments that keep student's from being in class.

### **Concert Choir (9-12) Grading Policy**

*The Concert Choir is a very active performing ensemble that requires each student's participation for success. Keswick Concert Choir students will be graded in three major areas:*

- A. Rehearsal Participation
- B. Performance
- C. Worksheets/Quizzes/Projects

Your performance in each of these areas will determine each quarter's grade. The percentage scale is based on 100%; the letter grade breakdown is consistent with Keswick's grading policy.

- A. Rehearsal Participation: (50%) Each student's rehearsal participation will be evaluated daily on a five point scale based on the following:
  - Attitude
  - Concentration
  - Respect for classmates
  - Talking only when permissible
  - Materials
- B. Performance: (40%) The performances listed in the Fine Arts Calendar play a major part in your final grade. At each performance you will be graded for timely arrival, uniform, and concert participation including behavior. An unexcused absence from a choir performance will result in a grade of 60% (F).
- C. Worksheets/Quizzes/Projects: (10%) There will be occasional worksheets, quizzes, and projects. These will be used to encourage growth and to assess student's progress. With hard work and concentration in class, students will have no trouble succeeding in this area.
- D. Attendance: This is an important part of our choir's success. One student's absence affects the whole group. Please be mindful of team aspect of choir class as you schedule necessary appointments that keep student from being in class.



**PERFORMING ENSEMBLE  
COMMITMENT CONTRACT 2011 - 2012**

**PLEASE PRINT, SIGN AND RETURN TO YOUR MUSIC DIRECTOR(S) (copy as necessary) BY MONDAY, AUGUST 29, 2011.**

Please check the group(s) you will be a member of this school year:

- Junior High Choir
- Concert Choir
- Praise Band

**For the Student:**

*"I have read the fine arts handbook, I agree to follow the rules in it, and I will cooperate with my director(s) in every way. I will attend all concerts and events pertaining to my group(s). I know this will take a lot of hard work, and I promise to do my very best at being an asset to my group(s), and to fulfill my God given musical potential this year."*

\_\_\_\_\_  
Student name (please print)

\_\_\_\_\_  
Student signature

**For the Parent(s):**

*"I understand and commit to follow the contents of the Fine Arts Handbook. I understand that my encouragement and commitment to my child's music education are a crucial part of my son/ daughter's success. My child will participate in all concerts and events. In the event there is an emergency, I will communicate as early as possible with my child's music director(s)"*

\_\_\_\_\_  
Parent signature